

UWA Telelabs: Remote Access to Laboratories

Instructions for students

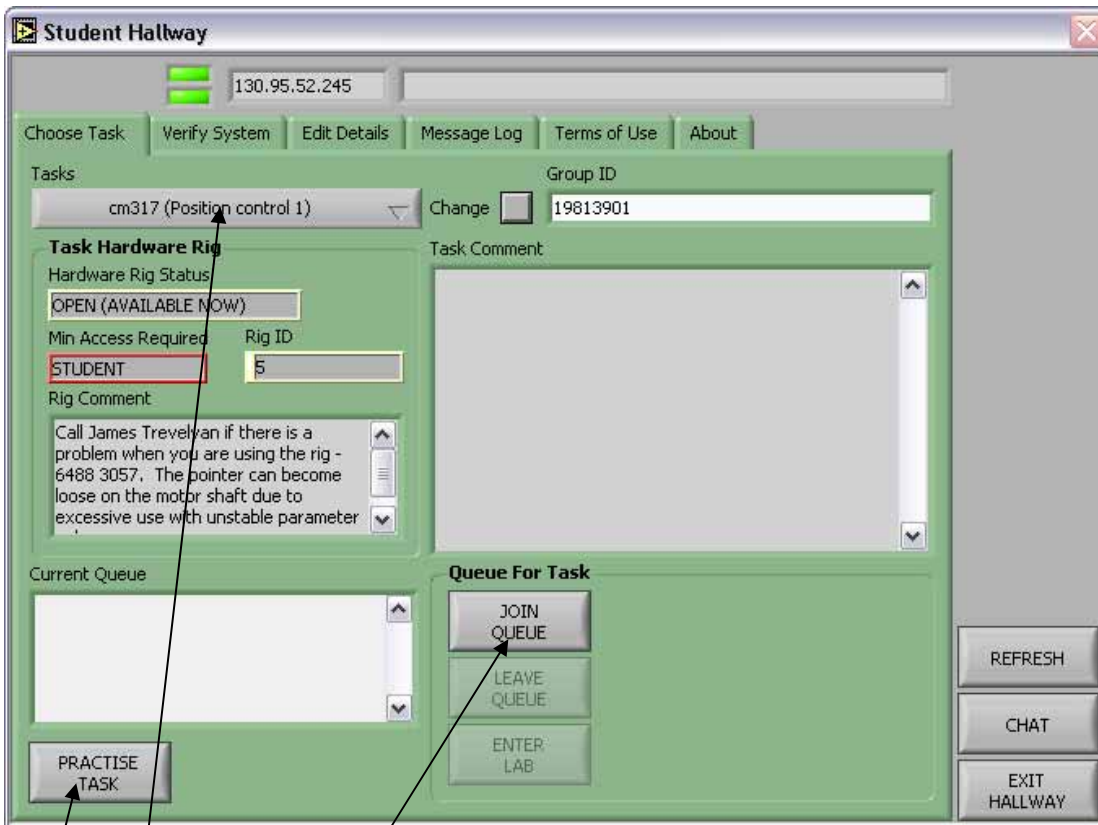
The UWA Telelabs system is unique. Only a small number of other universities can offer remote laboratory access to their students (e.g. MIT, Stanford, Stevens Institute of Technology, University of Hannover, Swiss Federal Institute of Technology and a few others).

If you are using the Mechanical School computer labs, go to the start menu, look for the program group “Other” and select “lol login”. If you are using your own PC, you can download and install the software from <http://telerobot.mech.uwa.edu.au/>. That will give you a desktop icon.

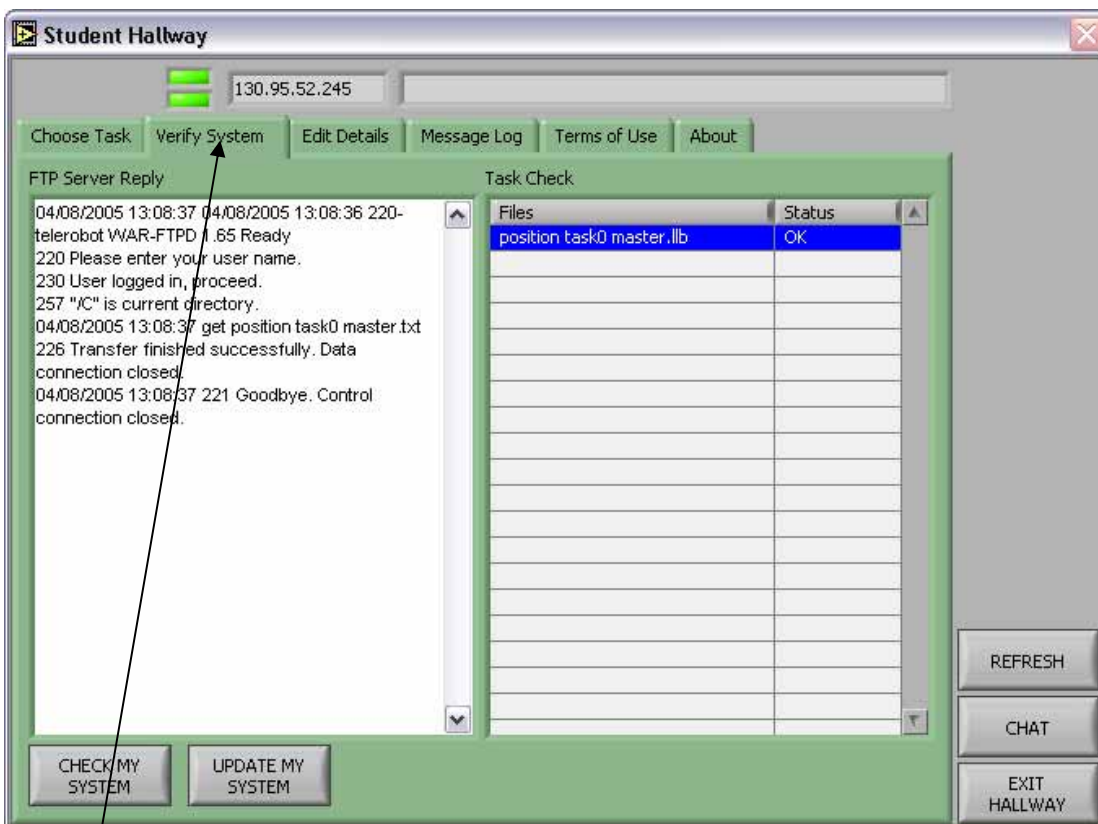


Login with your student number (user name and password). When you first login, change your password (see below). If you cannot login, see the registration instructions at the end of this short guide.

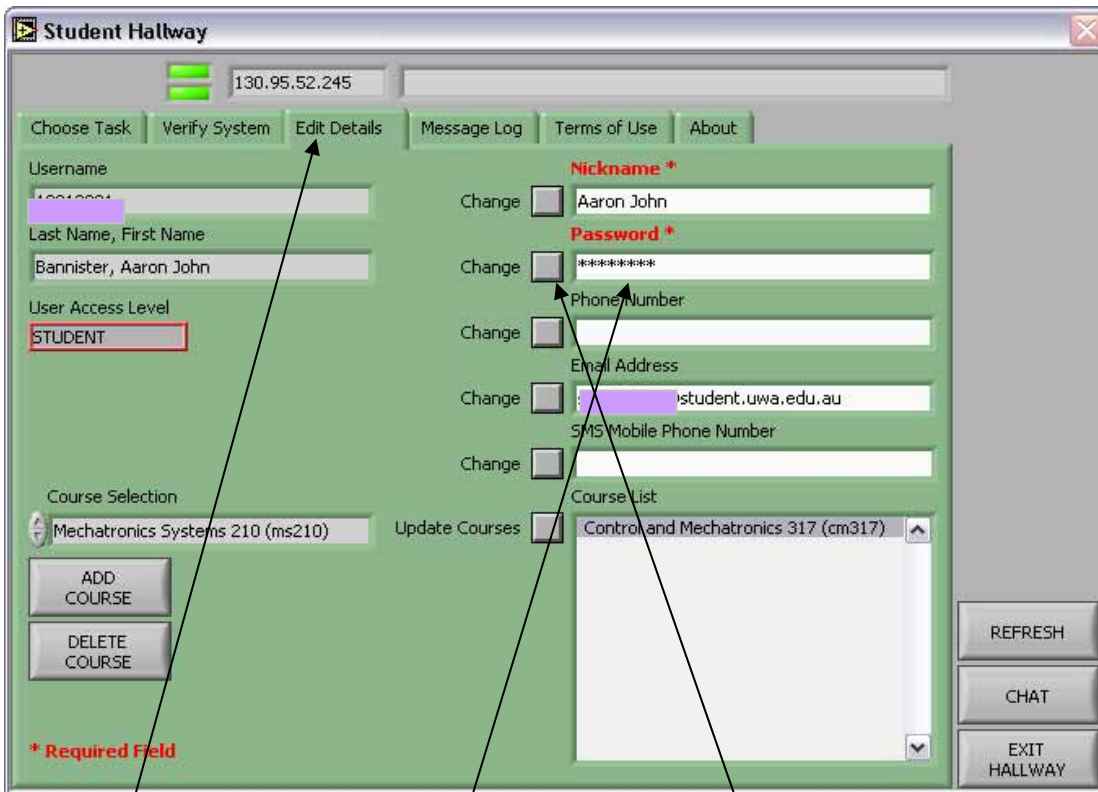
Note that some experiments may be located on other servers: select from the menu here.



Select the task and join the queue. You can practice the task while waiting in the queue (not available for Telerobot).



Use this tab to check that you have the most up-to-date experiment software. Use the 'UPDATE MY SYSTEM' to download the latest revision.



Use this tab to change your password here. Press the 'change' button to make the change permanent.

Late Registration

If you cannot login, it is probably because you were not enrolled when we collected the class lists. Register at:

<http://telerobot.mech.uwa.edu.au/>.

When you complete the web-based registration form, use the following authorisation code:

Control and Mechatronics:	c&mx
Mechanisms and Multibody Systems:	mmsx
Mechatronic Systems:	msx
Mechatronics Design	mdx

It usually takes 2 – 3 days for the registration to be processed.